

# START A READY LIFE



**Principal Architect:** I Chaney

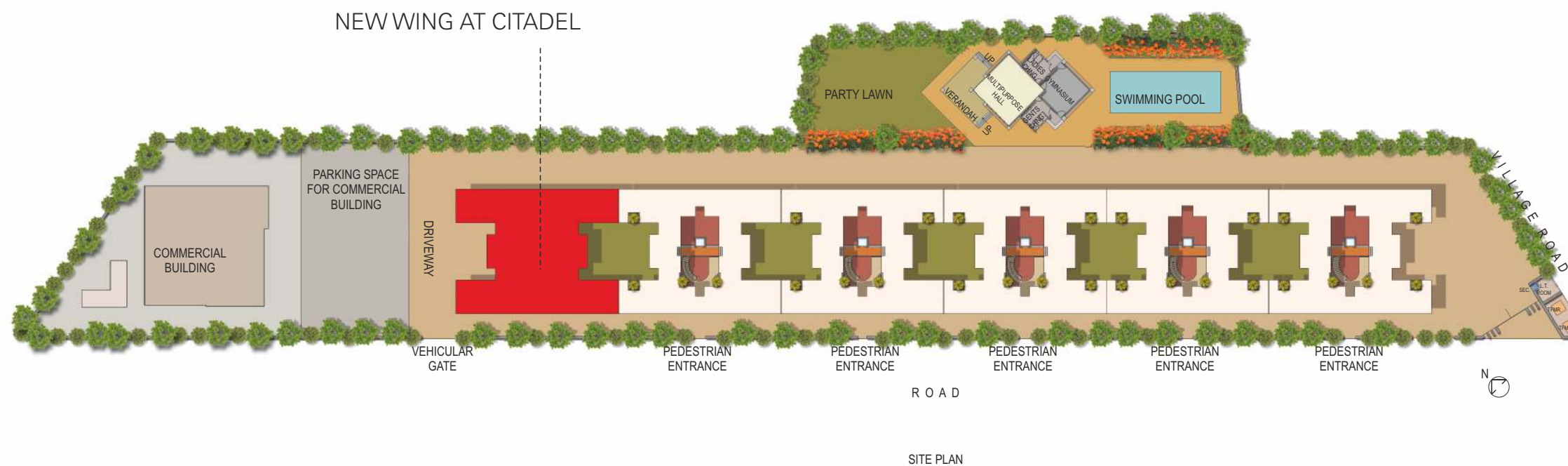
**Site Address:** S No 61 - 2/8, Off Salunke Vihar Road, Wanowrie, Pune - 411040  
**Corporate Address:** 239/240, Clover Centre, 7, Moledina Road, Camp, Pune - 411001  
**Phone:** +91 20 2613 2000 • **Fax:** +91 20 6603 3886  
**Email:** sales@cloverbuilders.com • **Website:** www.cloverbuilders.com



Disclaimer: The specifications, images and other details herein are only indicative and the developers/owners reserve their rights to change any or all of these in the interest of the development. This printed material does not constitute an offer and/or contract of any type between the developer/owner and the recipient. Any purchase/lease of this development shall be governed by the terms and conditions of the agreement for sale/lease entered into between parties and no details mentioned in this printed material shall in anyway govern such a transaction.

## AN UPLIFTING LIFESTYLE THAT'S CRAFTED AROUND LIFE

In 1996, we laid the foundation of a perfected lifestyle at Clover Citadel - Wanowrie, and delivered it in 2001. It was a perfect welcome to a meticulously crafted lifestyle that is still enjoyed by our happy customers. Upholding our tradition of constant upgradation and innovation, we are proud to announce the launch of the 6th building at Clover Citadel.



You too, can now be a part of the Clover Citadel family, and enjoy a new life.

### PROJECT HIGHLIGHTS:

- Spacious 2 & 3 BHK with Terrace Options
- Spacious Clubhouse with Recreation Features
- Swimming Pool amidst Manicured Lawns
- Ample Parking Space



## AN IDEAL LOCATION THAT IS CRAFTED WITH DAILY LIFE CONVENIENCES

At just a stone's throw away, you'll find everything from schools, colleges, workplaces, shopping areas, parks and much more. It truly is the best of both worlds: A perfectly crafted home, and a life full of conveniences.

**LOCATION HIGHLIGHTS:** Pune Railway Station just 7 kms away • School & Colleges in close proximity • Shopping Malls & Market in vicinity • Ruby Hall Hospital - 300 mtrs away • Corinthians Club - 4 kms away • M.G. Road - 6 kms away • Well-connected through major arterial roads

## EVERY PART OF YOUR HOME CRAFTED TO THE DETAIL

We have taken every measure to ensure that your lifestyle is crafted to the best. From the floorings to the fittings, from electrical equipments to the finely painted walls, everything in your new home is ensured to have highest levels of quality and perfection.

### Flooring

- Branded vitrified tiles in all rooms
- Laminated flooring in the master bedroom

### Kitchen

- Polished granite platform with glazed ceramic tiles
- Dado up to 2 feet with stainless steel sink

### Sanitary Fittings

- Branded anti-skid vitrified tiles for flooring & dado
- Duravit or equivalent sanitary fittings
- Jaguar or equivalent CP fittings
- Toughened glass shower partitions

### Painting

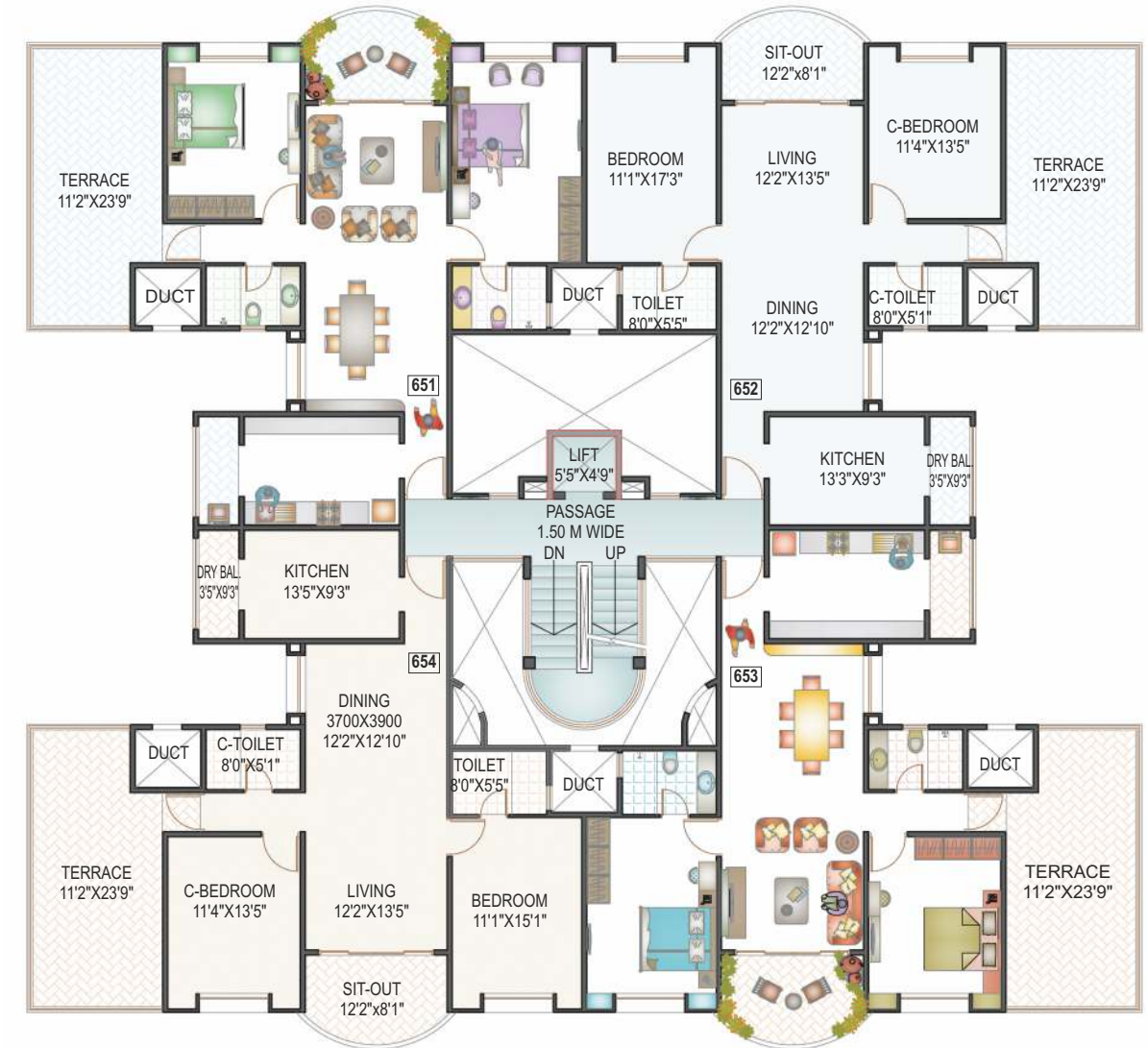


EVERY FLOOR, EVERY HOME,  
CRAFTED TO PERFECTION

FIRST FLOOR PLAN



FIFTH FLOOR PLAN



TYPICAL FLOOR PLAN (2<sup>nd</sup>, 3<sup>rd</sup> & 4<sup>th</sup>)

